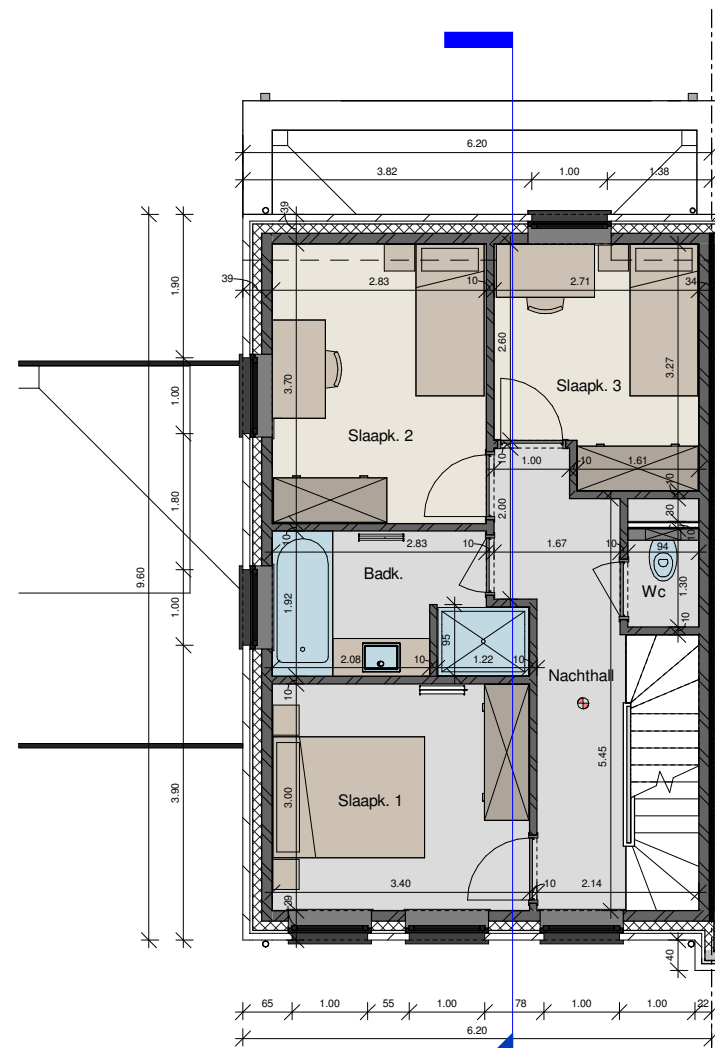
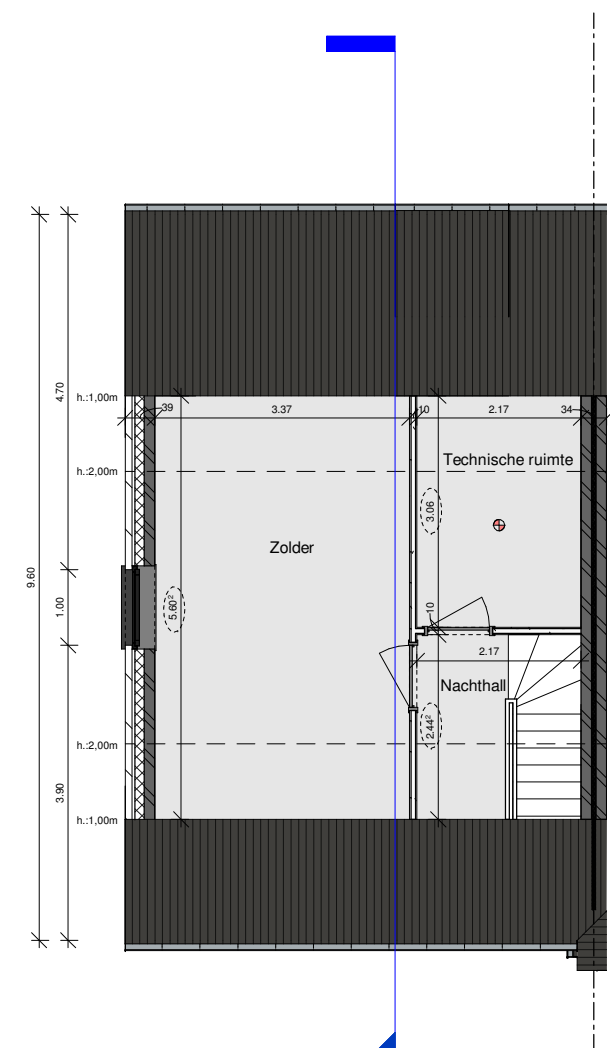


Grondplan



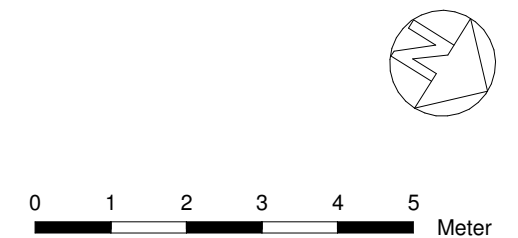
Verdieping



Zolder

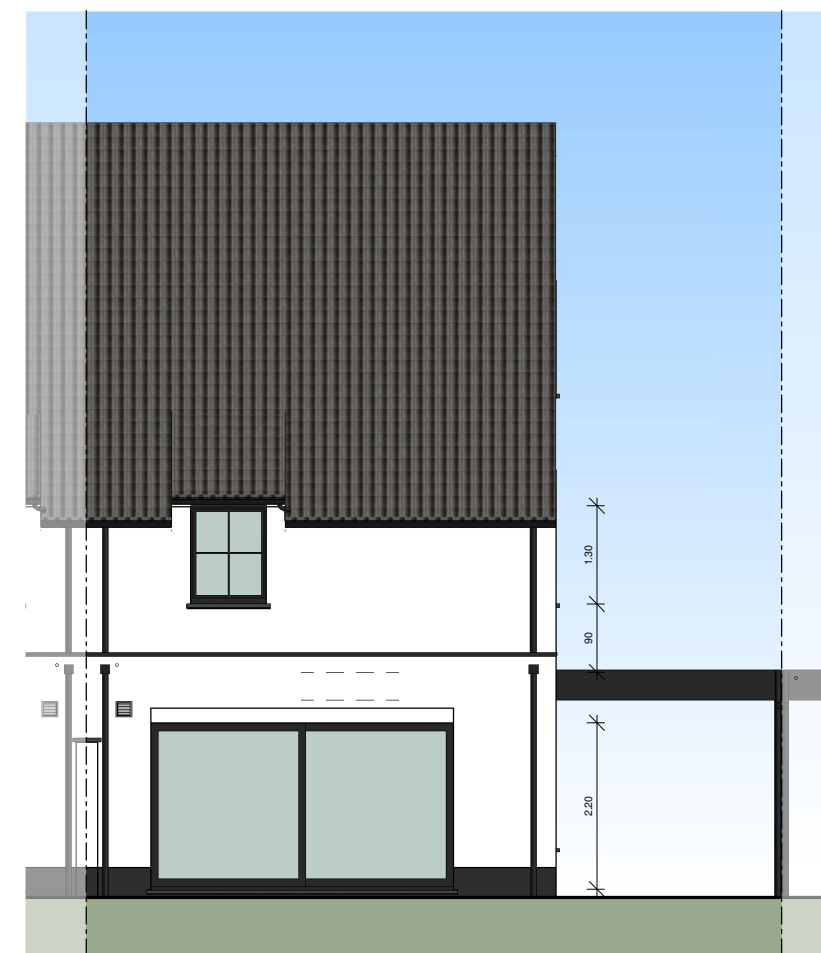
Perceelsoppervlakte lot 7	
Niveau	Opp.
- 01 Terrein	213 m ²

Oppervlakte lot 7	
Niveau	Opp.
00 - Gelijkvloers	68.82 m ²
10 - Verdieping	59.52 m ²
20 - Zolder	35.83 m ²
	164.17 m ²





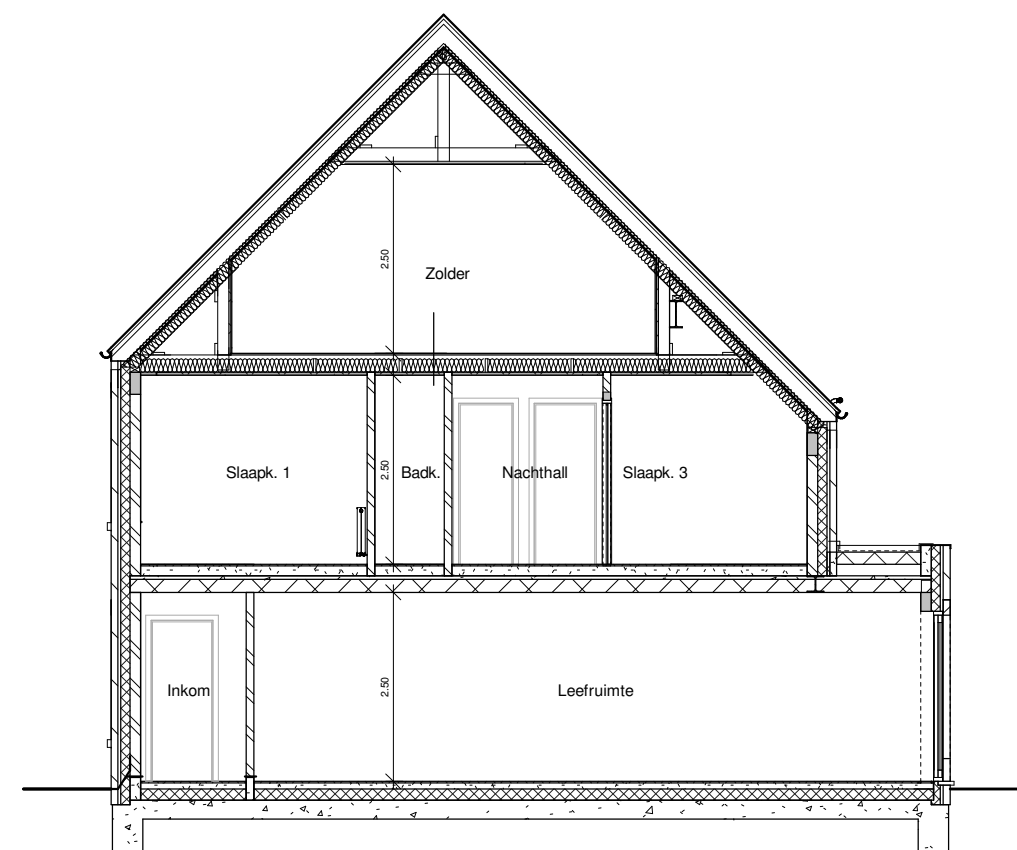
Voorgevel



Achtergevel



Zijgevel links



Doorsnede

